

ANEXO - 02

ESTE ANEXO - 02, EM 3D - REPRESENTA OS AMBIENTES Á SEREM MONTADOS E AS CORES A SEREM USADAS, COM UMA APRESENTAÇÃO PRÓXIMA DA REALIDADE, POIS ALGUMAS MEDIDAS DEVERÃO SER CHECADAS IN LOCO.

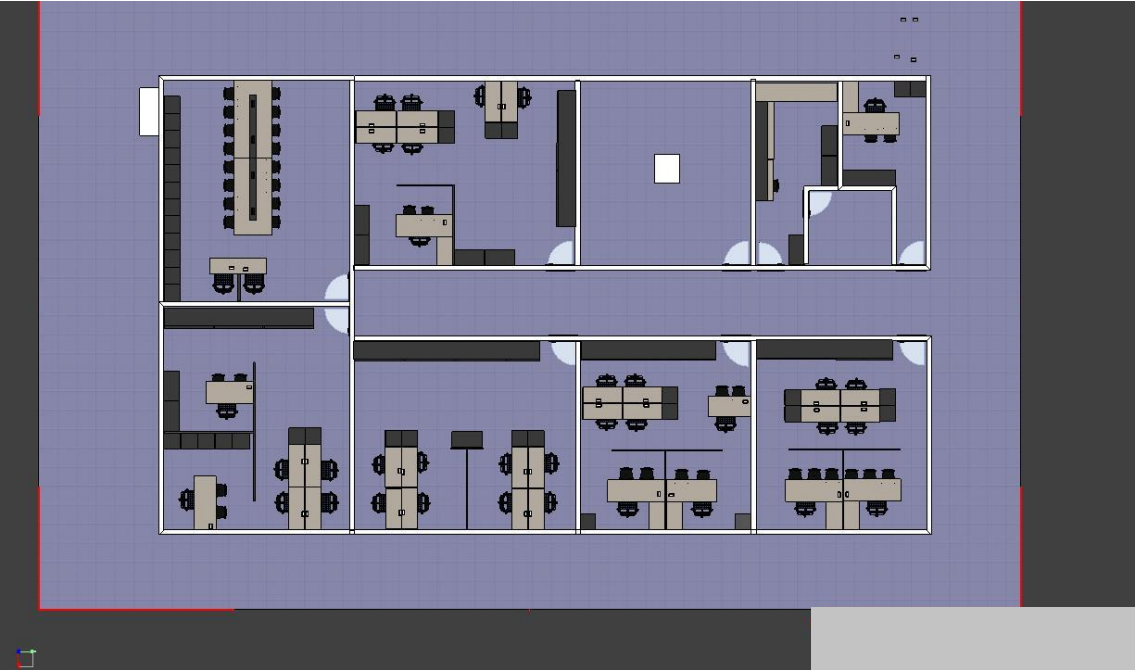
Planta baixa, Piso Superior.



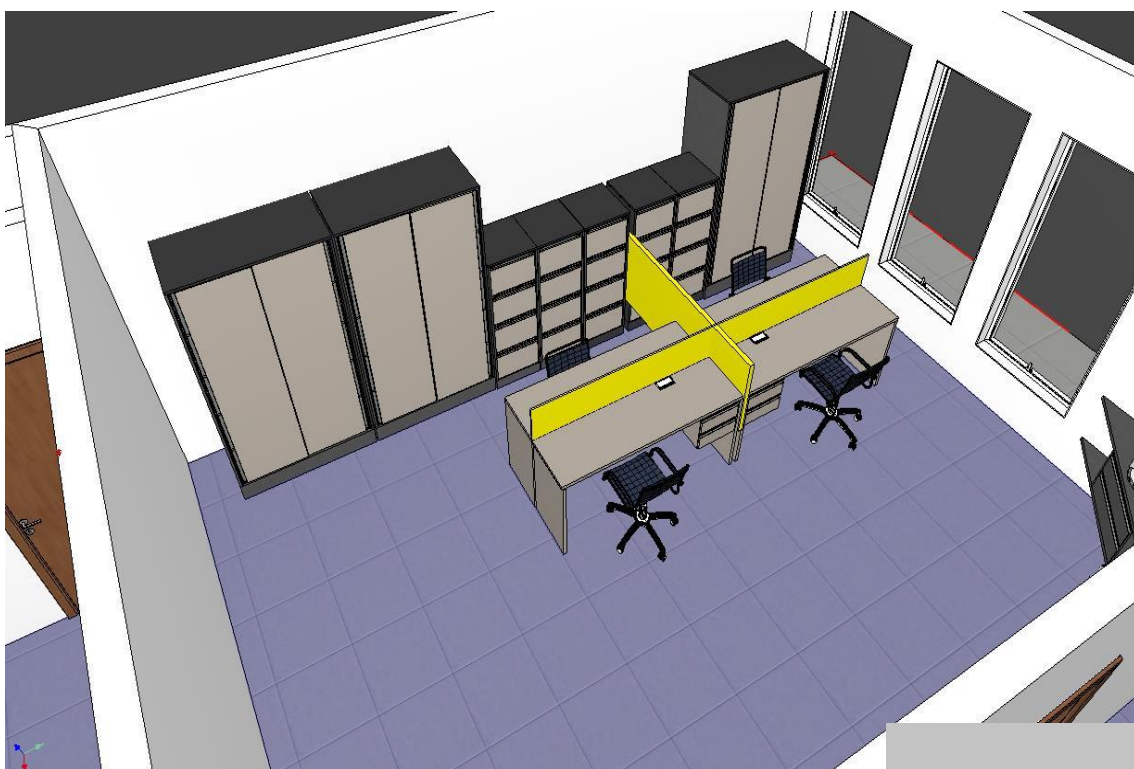
Planta baixa, frente Piso Inferior.



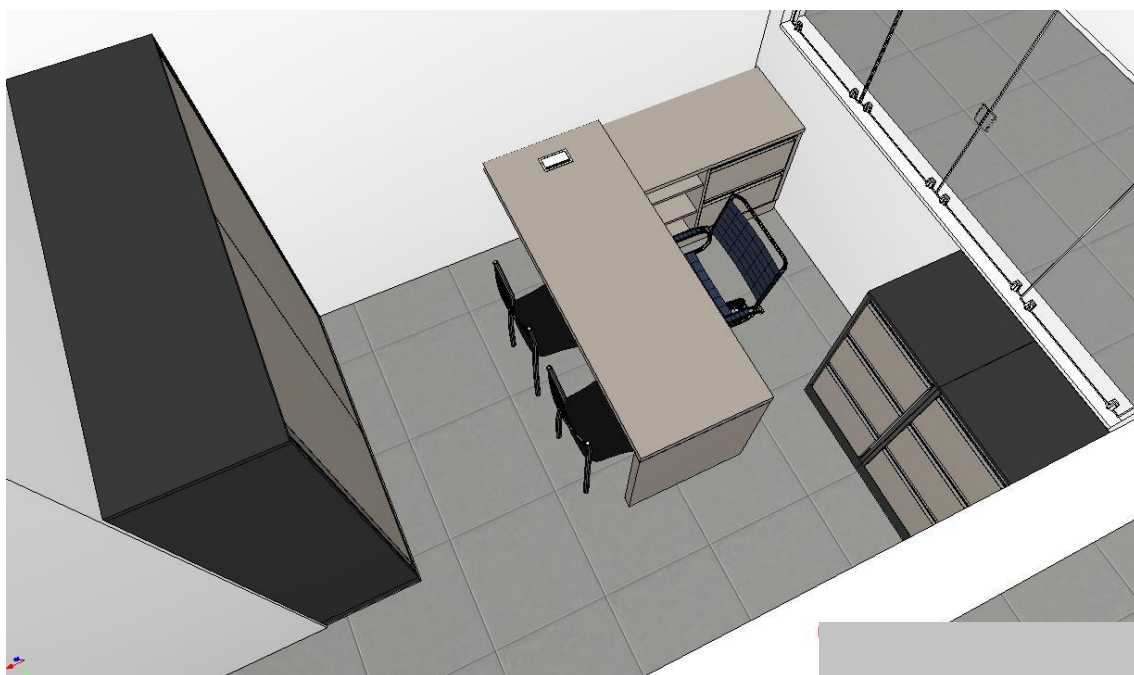
Planta baixa, fundo Piso Inferior



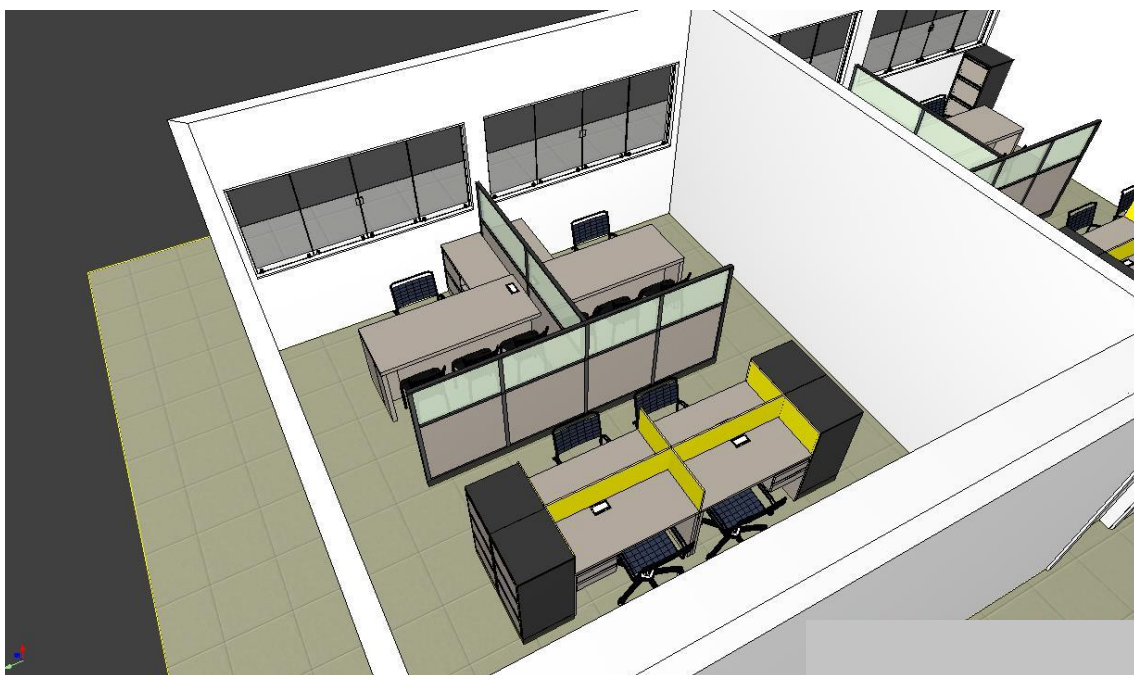
SALA DA ADMISTRAÇÃO



SALA DE CONTROLE INTERNO



SALA ENGENHARIA



SALA DE INFORMATICA



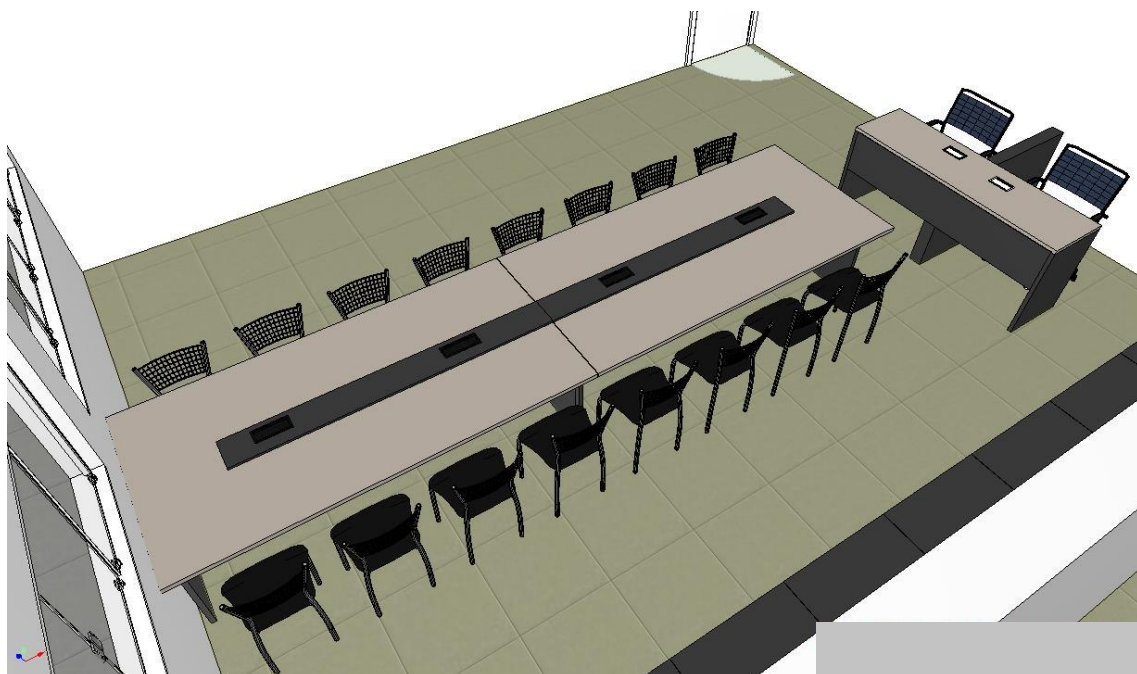
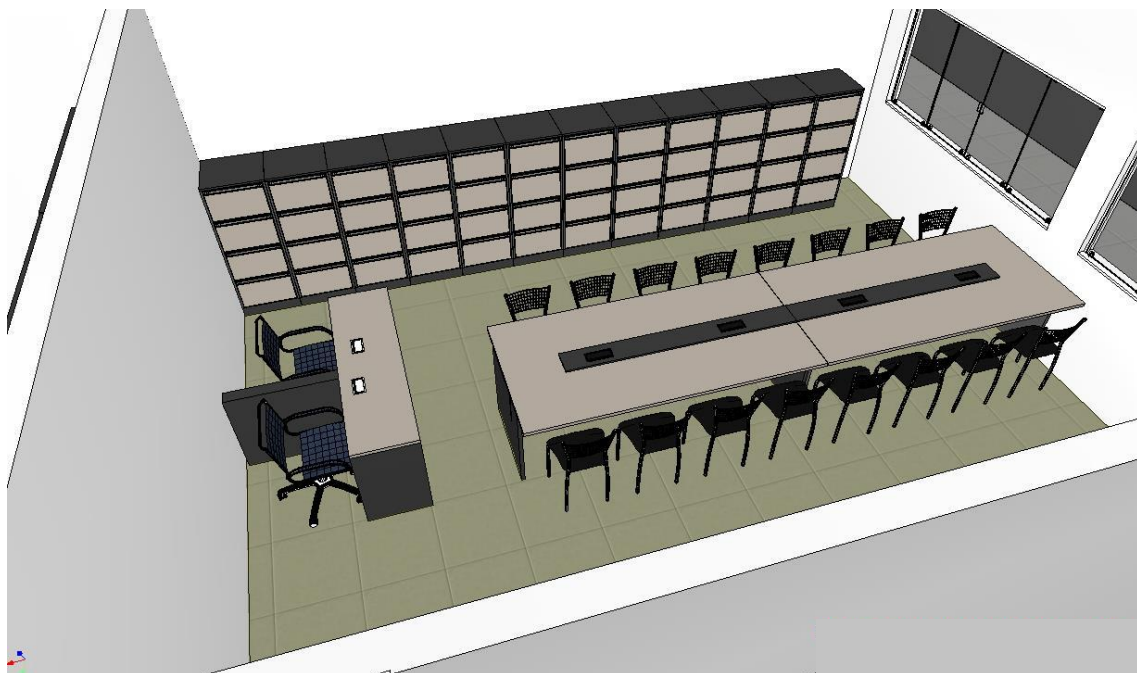
SALA DO JURIDICO

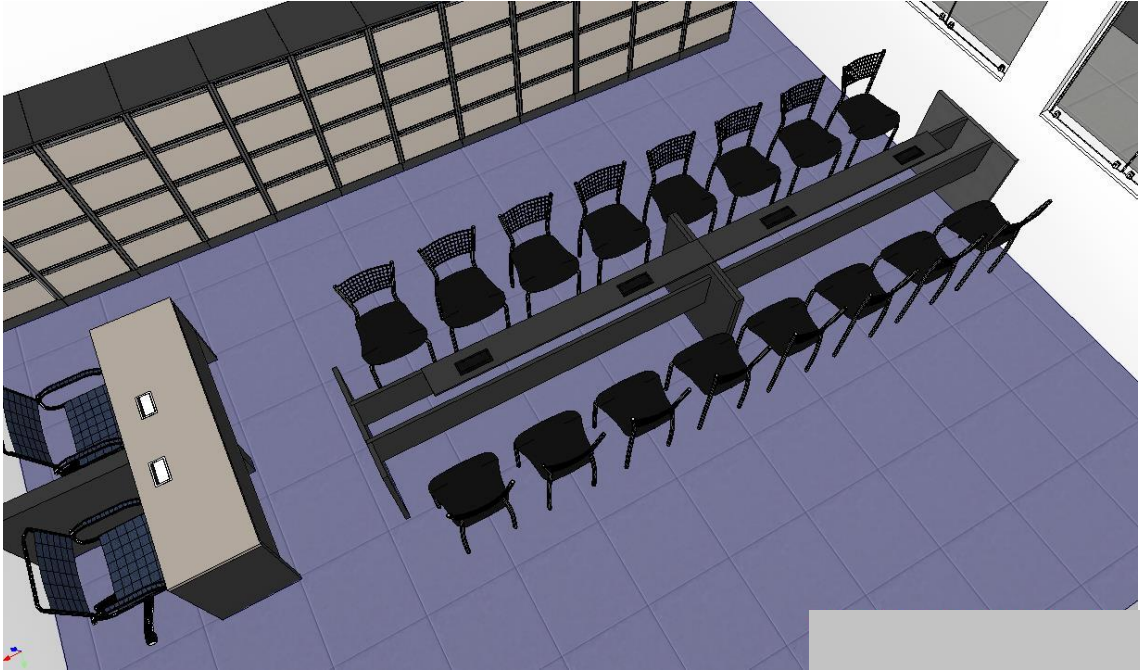


SALA LICITAÇÃO E COMPRA



SALA PREGÃO

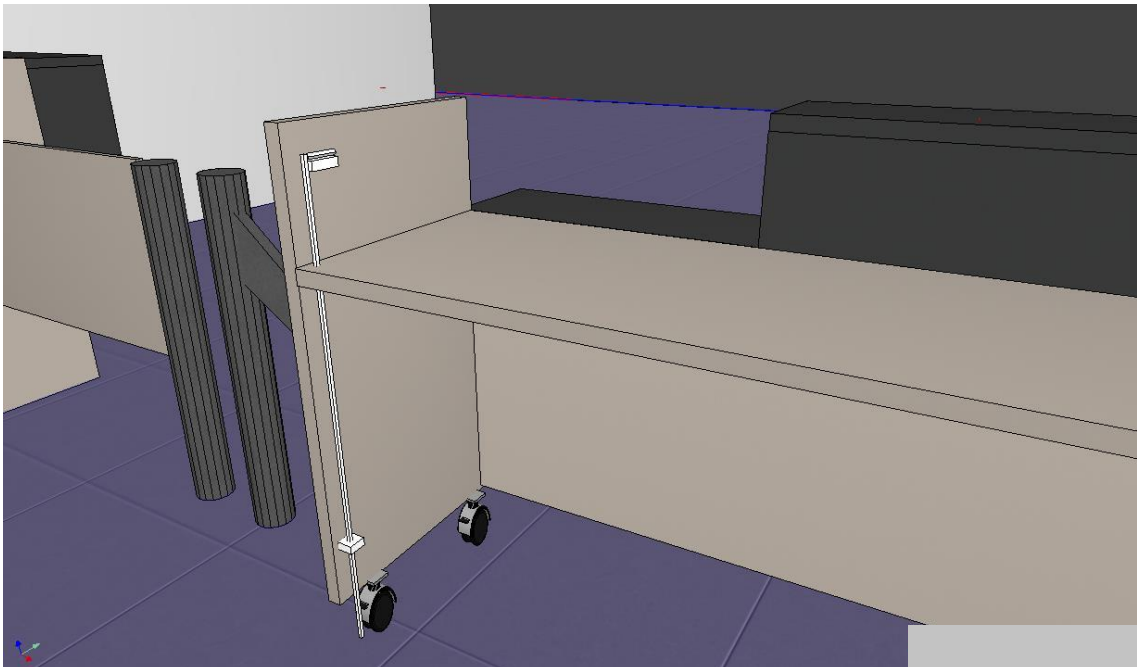
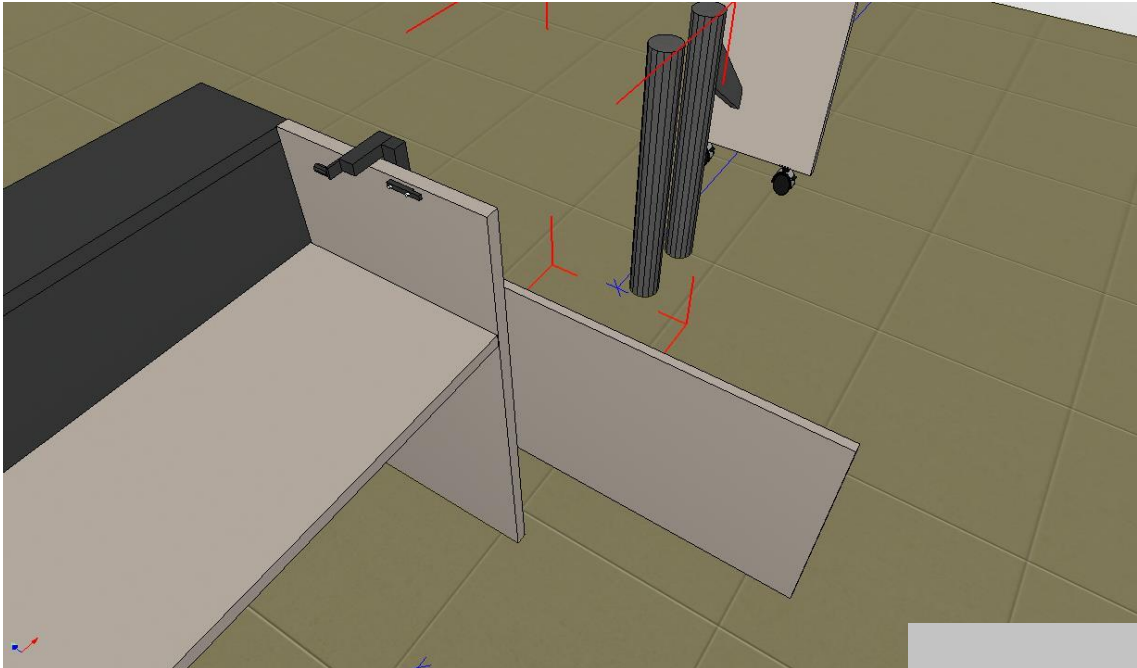


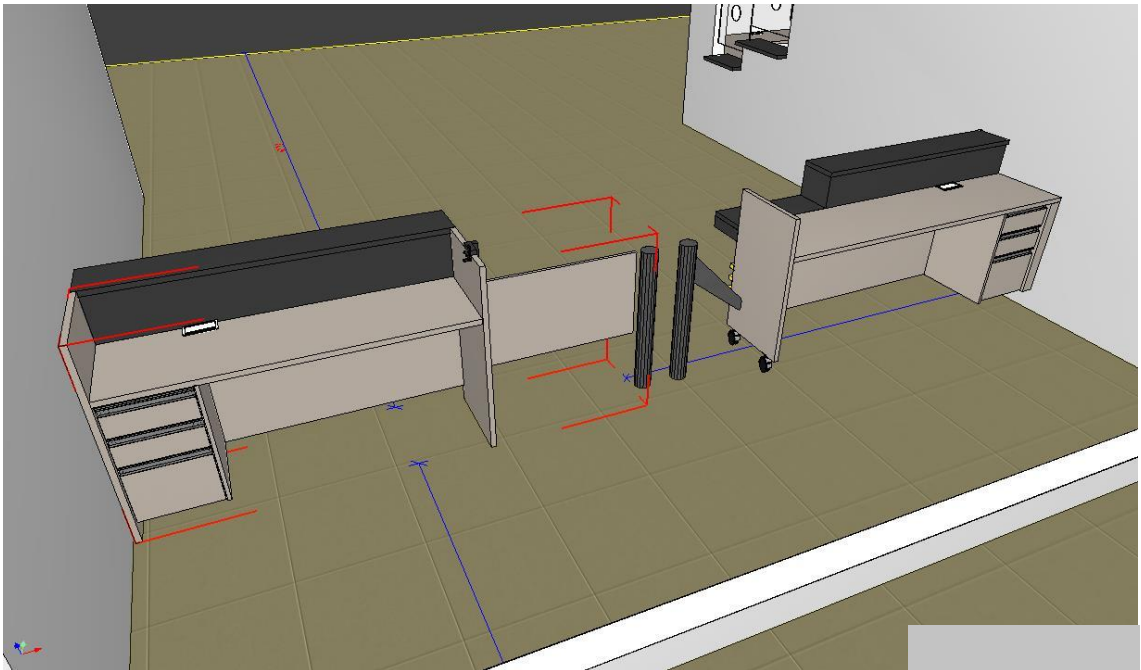
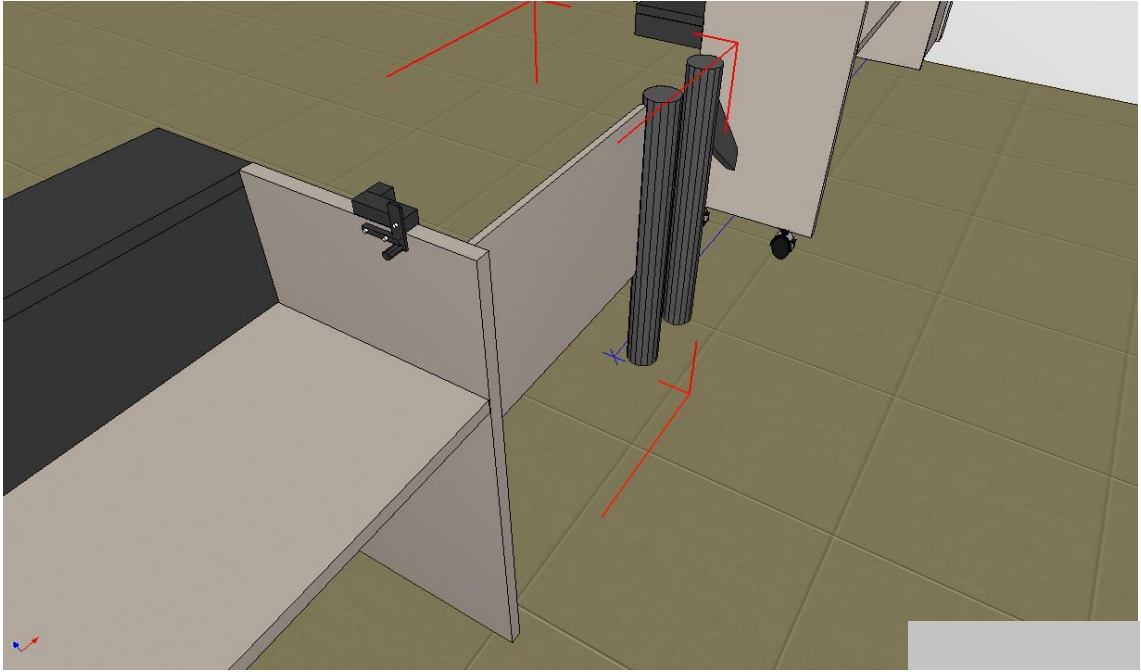
[illegible]

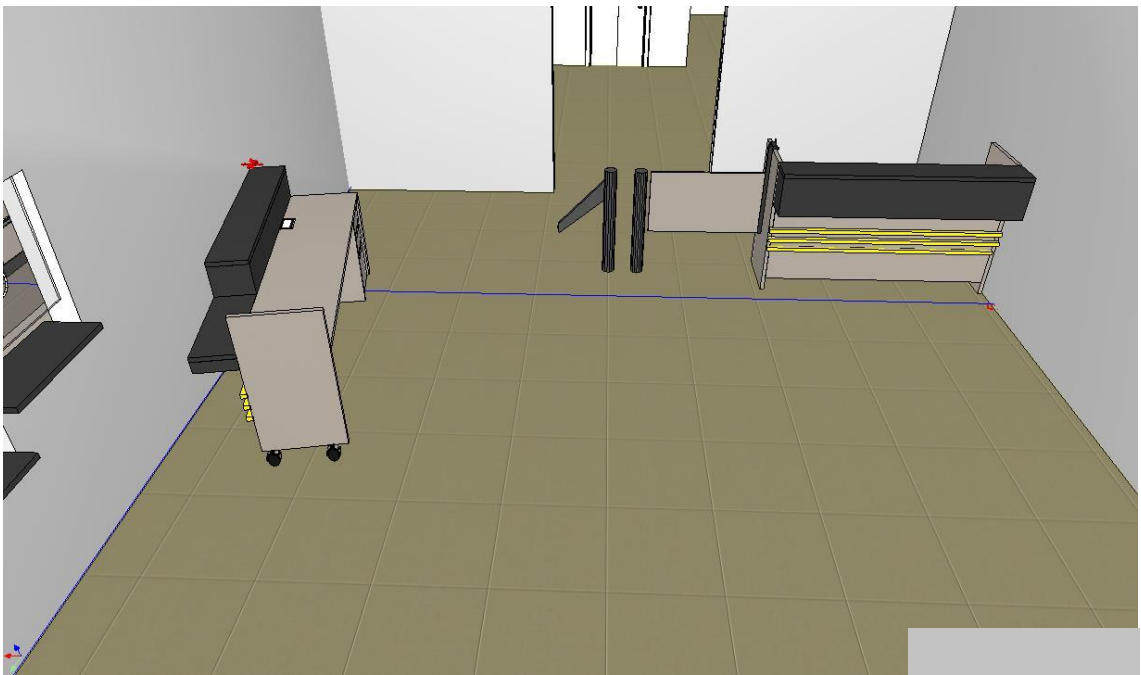
A 3D architectural rendering of a modern office interior. The room features a large window on the left wall, a long desk with a black office chair, and a large storage unit with multiple compartments. The floor is tiled, and the walls are white. A small desk with two chairs is visible in the foreground.

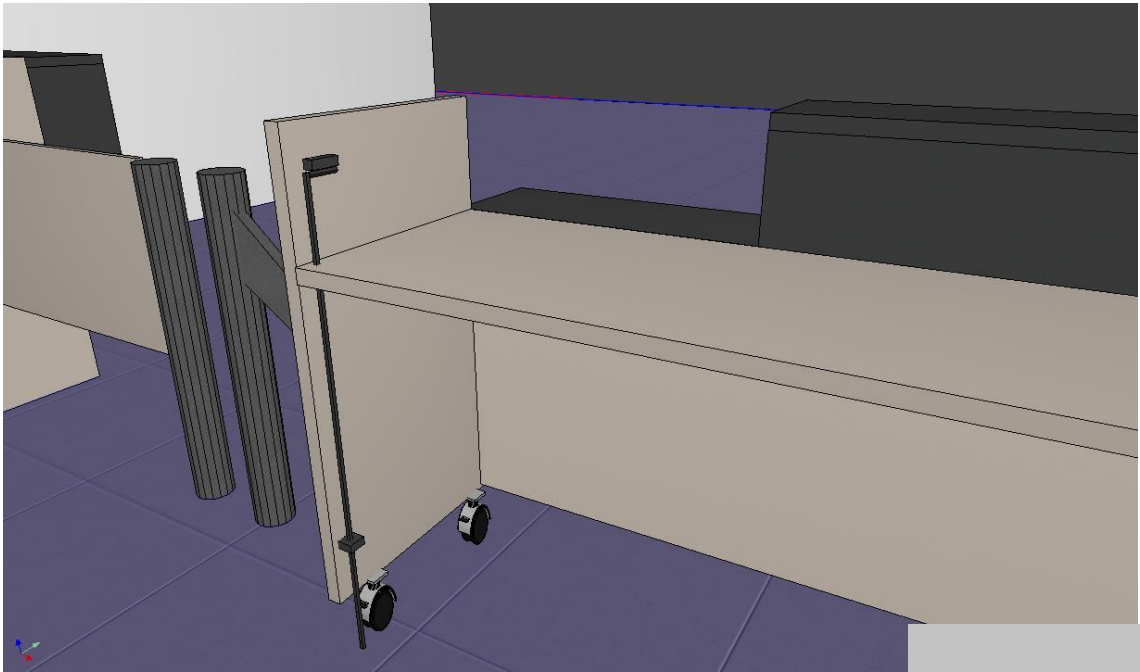
[illegible]

SALA RECEPÇÃO







[illegible]

SALA RH

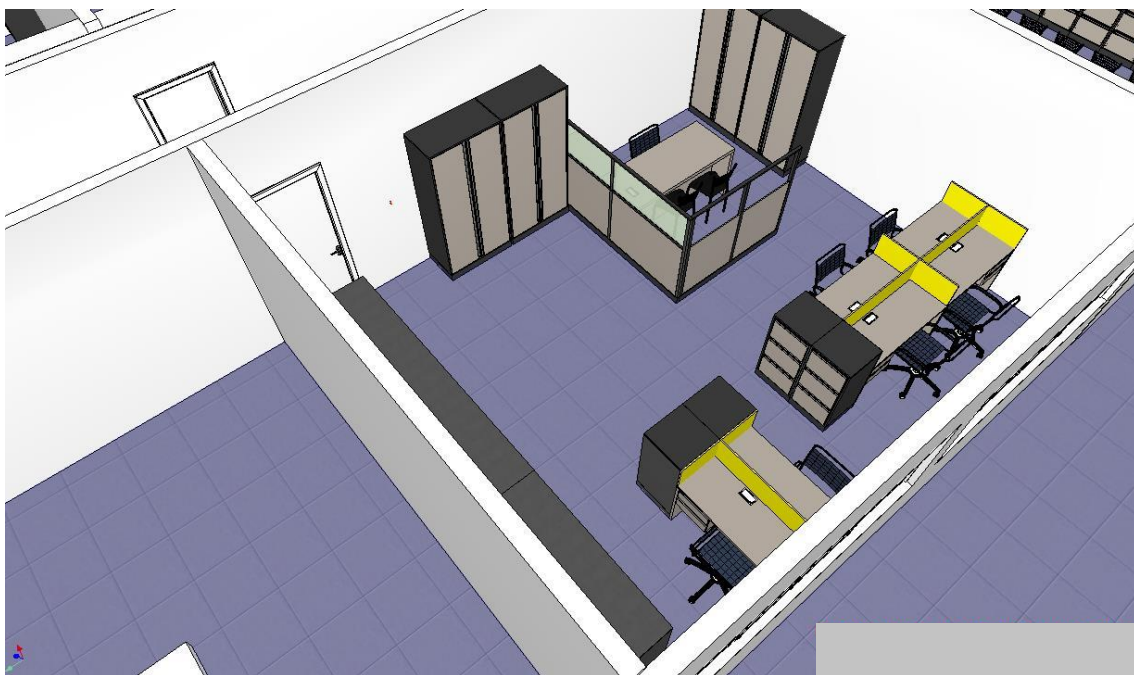


[illegible]

SALA TESOURARIA

[illegible]

SALA TRIBUTAÇÃO

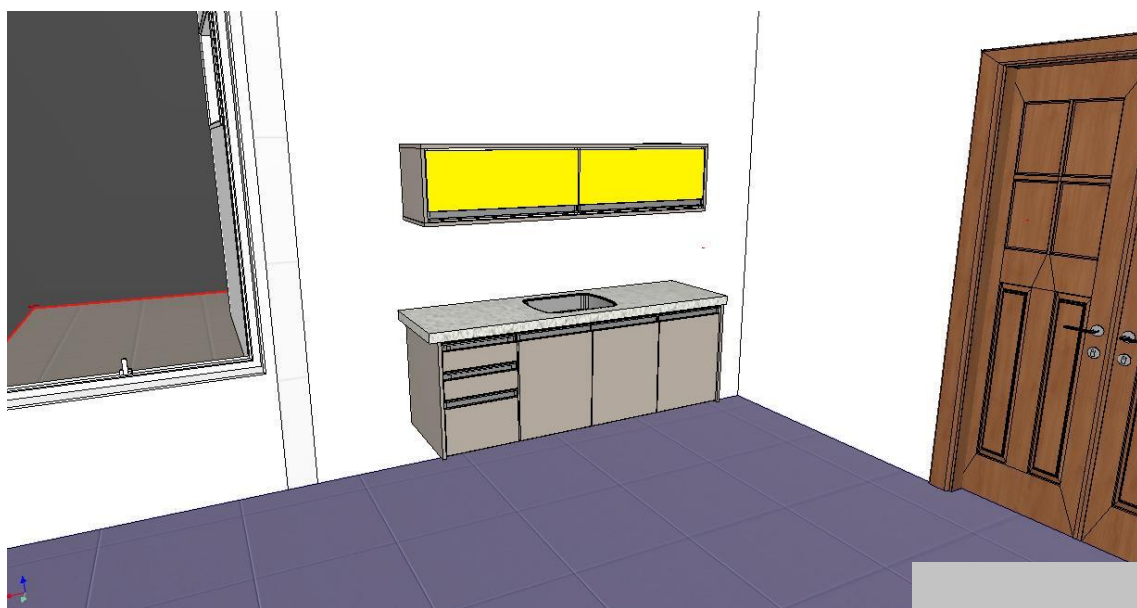
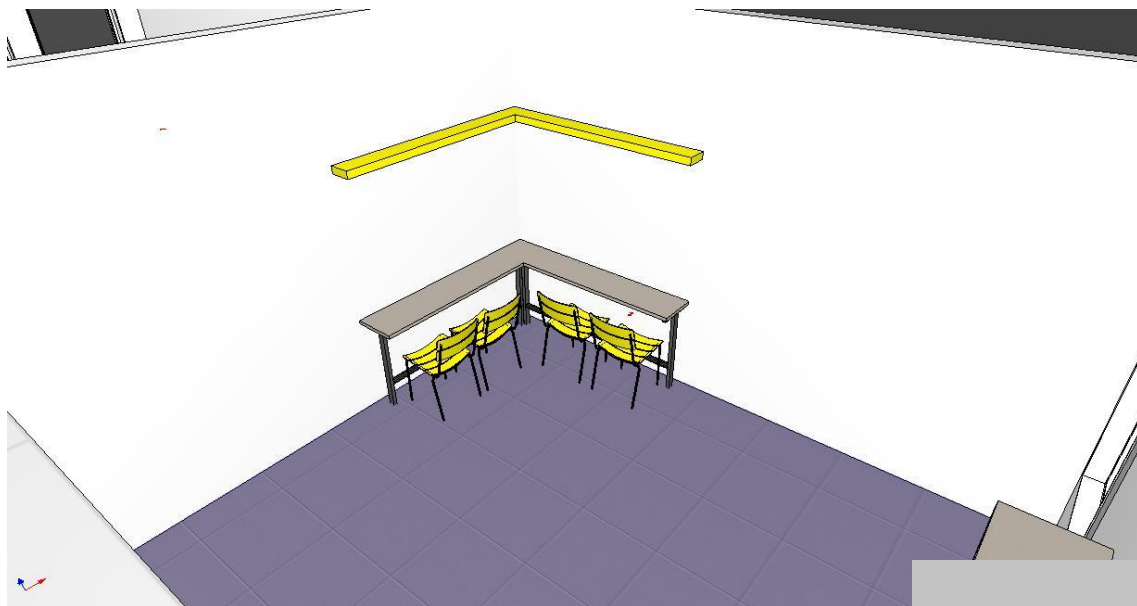


[illegible]

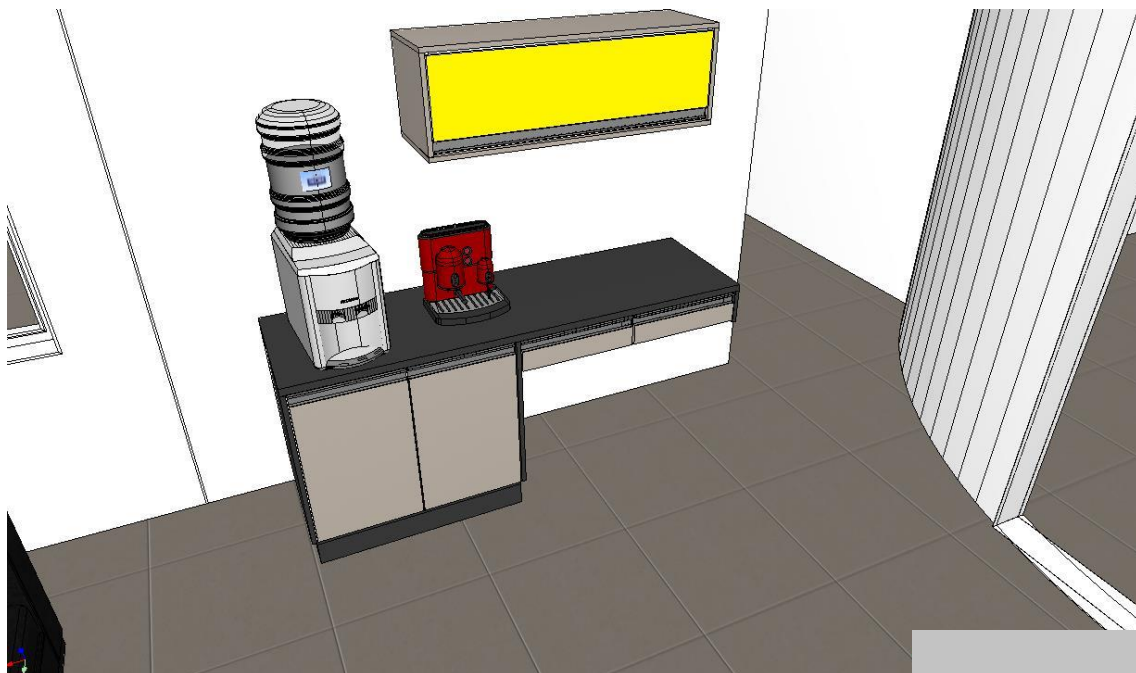
SALA FRAUDARIO

[illegible]

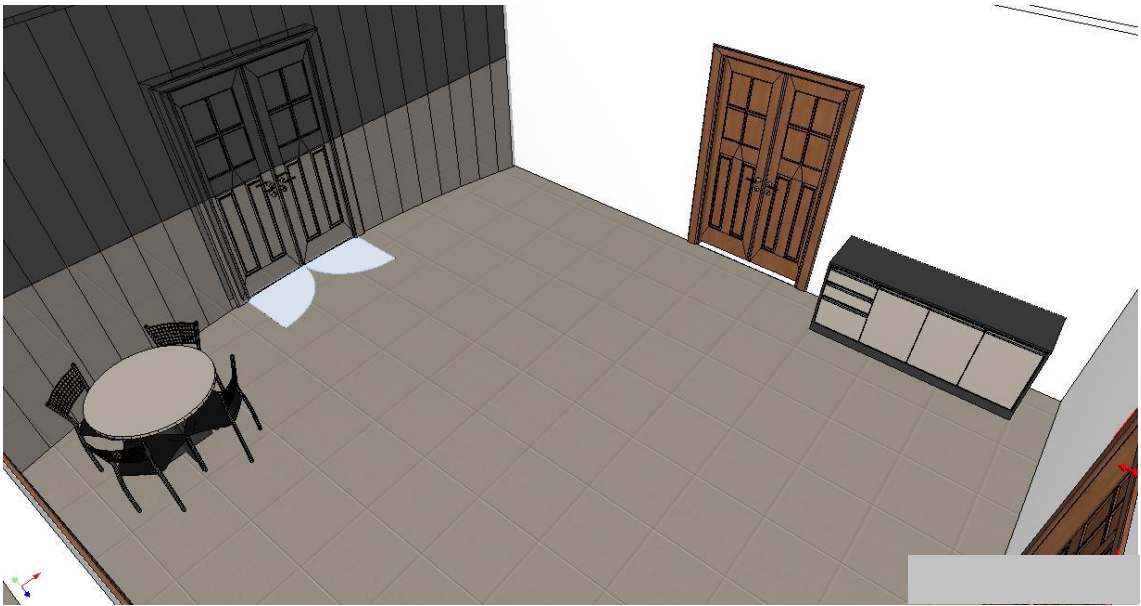
SALA DA COPA

[illegible]

SALA DE ESPERA

[illegible]

SALA DE REUNIÃO



XX
XX

D2M PLANEJADOS
JULIO YURI MORTATI
CNPJ Nº 24.591.664/0001-30